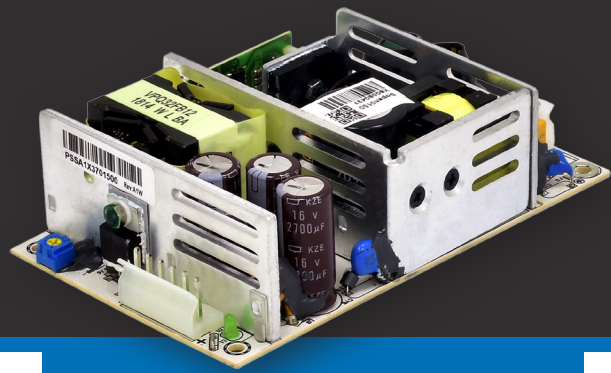




AC TO DC OPEN FRAME POWER SUPPLY

SSF-1501PS SERIES



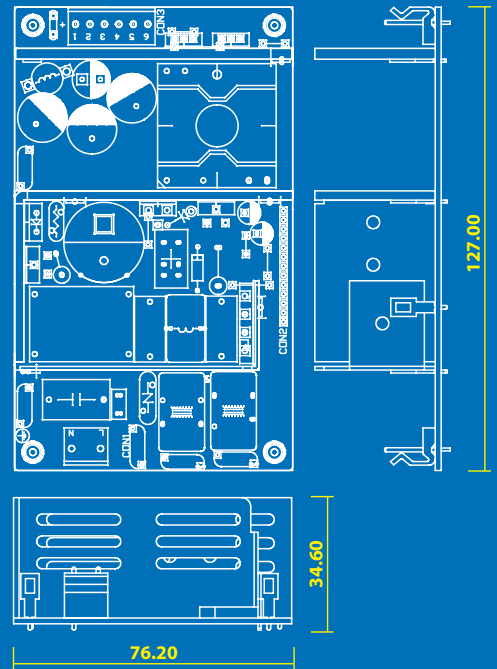
FEATURES:

- ✓ Universal AC input / Full range
- ✓ Built in Class B EMI filter
- ✓ Short circuit protection
- ✓ Over voltage protection
- ✓ Over power protection
- ✓ Highly reliable Japanese 105 °C aluminum electrolytic capacitors
- ✓ Efficiency: 85 % - 87 % (typical)
- ✓ No load power consumption ≤ 0.5 W
- ✓ Active power factor correction
- ✓ Fully regulated output
- ✓ Working temperature: 0 °C – 50 °C

Model name	Total Power (W)	O/P Voltage (V)	O/P Current (A)	Efficiency (%)
SSF-1501PS-12	150	12	12.5	85 %
SSF-1501PS-48	150	48	3.125	87 %
SSF-1501PS-55	150	55	2.728	87 %

APPLICATIONS:

- Network switches (fast Ethernet switch, PoE switch)
- Computer data storage (internal storage, external storage, NAS storage)
- POS systems
- Automated teller machines



Dimensions:

127 mm (L) x 76.2 mm (W) x 34.6 mm (H)

Safety:

CB	cUL	CCC
✓	✓	—
cTUVus	TUV	BSMI
—	✓	—

EMI/EMC:

CE	FCC	RCM
✓	✓	—



SPECIFICATIONS MAY CHANGE WITHOUT PRIOR NOTICE.